



For Immediate Release: April 10, 2015

**INTERTEK WARNS OF INVALID ETL CERTIFICATION MARK
ON PHOTOVOLTAIC MODULE PANELS
MANUFACTURED BY 1SOLTECH, INC.**

Intertek Testing Services NA, Inc. (“Intertek”) notifies consumers, retailers and distributors that an unknown number of Photovoltaic Module Panels manufactured by 1Soltech, Inc. (“1Soltech”) bear an invalid ETL Certification Mark (“ETL Mark”). It is unknown if these products are in compliance with the applicable safety standard.

There appear to be two categories of products bearing an invalid ETL Mark: (1) products produced after Intertek terminated 1Soltech’s authorization to utilize the ETL Mark, and (2) products that were never included in Intertek’s Certification Program.

Products Produced After Termination of Authorization to Mark:

On February 14, 2013, Intertek terminated 1Soltech’s Authorization to Mark. This means that beginning February 14, 2013, 1Soltech was not authorized to apply the ETL Mark to any Photovoltaic Module Panels produced on or after that date and that any Photovoltaic Module Panels manufactured after that date were not in Intertek’s Certification Program. Photovoltaic Module Panels manufactured prior to this termination date and in accordance with the Intertek Report, carry a valid ETL Mark.

Product: *Photovoltaic Module Panels*

Model(s): *1STH-215, 1STH-220, 1STH-225, 1STH-230, 1STH-240, 1STH-245, 1STH-250, 1STH-255, 1STH-260, 1STH-320, 1STH-325, 1STH-330, 1STH-335, 1STH-340, 1STH-345, 1STH-350, 1STH-FRL-4H-220, 1STH-FRL-4H-245, 1STH-FRL-4H-250, 1STH-FRL-4H-255, 1STH-FRL-4H-260*

Manufacture Date: *Products manufactured from February 14, 2013 – Current Date bear an invalid ETL Certification Mark. Products bearing a label without a manufacturing date are in question.*

Associated Manufacturer: *1Soltech, Inc.*

Sold at: *Various Distributors*

Products Never Included in Intertek’s Certification Program:

Intertek received information that the ETL Mark was also applied to Photovoltaic Module Panels that have never been included in Intertek’s Certification Program and as such, never received authorization to bear an ETL Mark. This means that these Photovoltaic Module Panels may not have been tested or evaluated against the applicable standard.

Product: *Photovoltaic Module Panels*

Other Model(s) including, but not limited to: *1STH-210, 1STH-265, 1STH-310, 1STH-315, “Second Generation”*

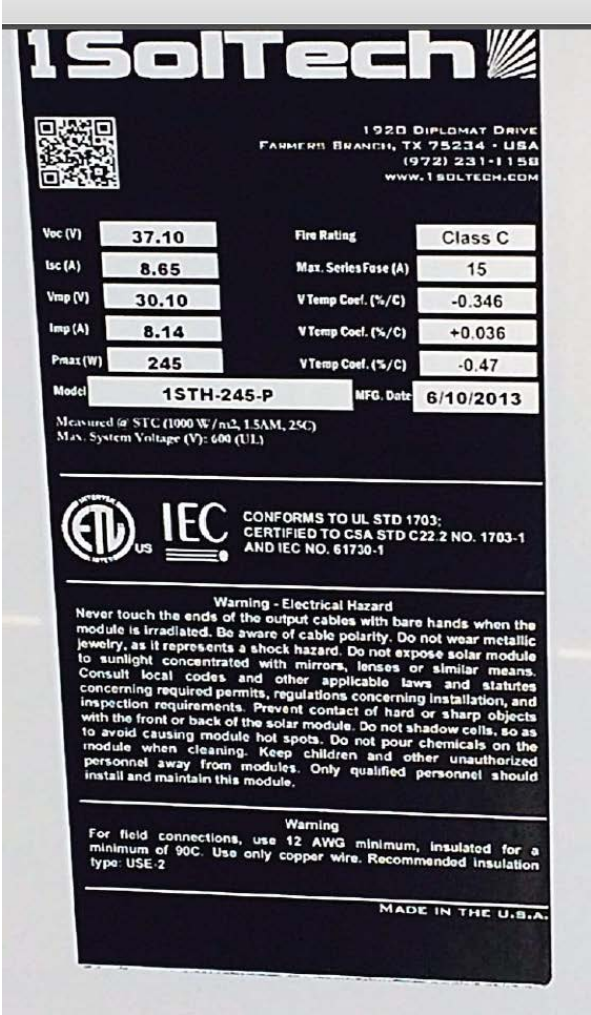
Manufacture Date: *All Dates bear an invalid ETL Certification Mark*

Associated Manufacturer: *1Soltech, Inc.*

Sold at: *Various Distributors*

Consumers who have questions about whether or not their 1Soltech Photovoltaic Module Panel(s) bear a valid or invalid ETL Mark are urged to contact Intertek immediately. Please contact Intertek at www.intertek.com/inspector-center/product-complaint and provide information regarding the product including product Model Number, manufacturing date, where the product is installed, and a photo of the product label.

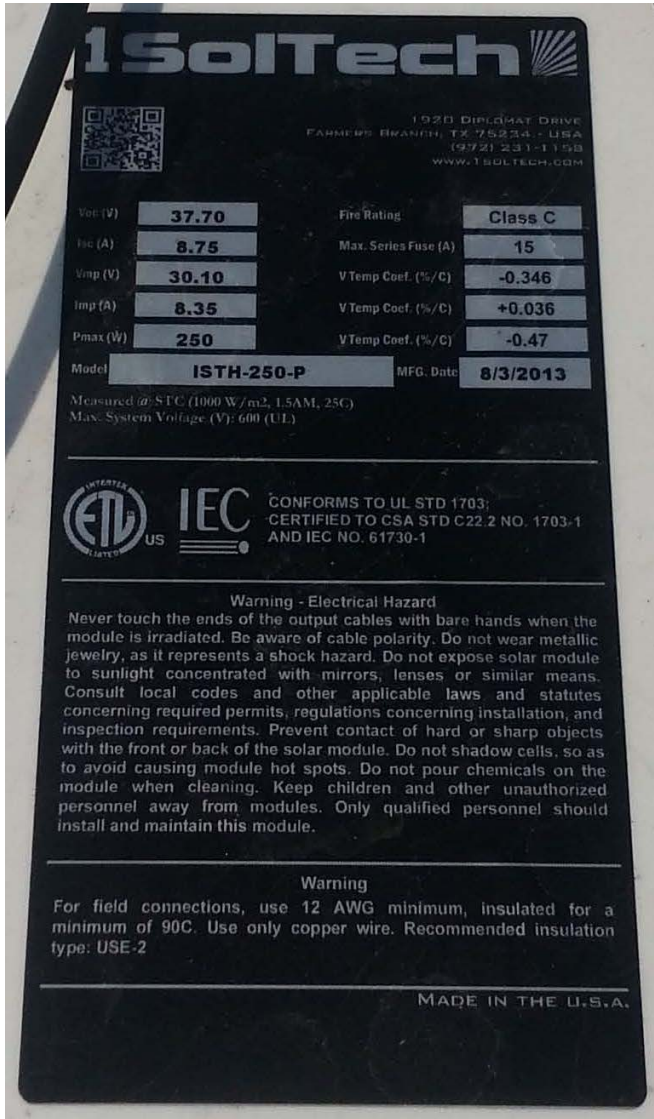
Sample Photo(s) of Product Labels:



*Photovoltaic Module Panel
Model 1STH-245-P
Manufactured on June 10, 2013*

*Bears Invalid ETL Mark
Product manufactured after Termination of
Authorization to Mark*

Sample Photo(s) of Product Labels:



*Photovoltaic Module Panel
Model 1STH-250-P
Manufactured on August 3, 2013*

*Bears Invalid ETL Mark
Product manufactured after Termination of
Authorization to Mark*